

*Enjoy the
Scenes of
Nature*



Alpine
Meadows

Alpine Meadows

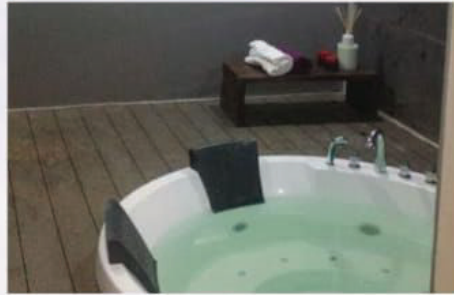


Embracing luxury in every aspect including architectural design, use of space, landscaping and array of features, Alpine Meadows from the House of Jains is a spectacular residential marvel. The entire development comprises of exclusive premium two and three bedroom apartments with the floor plan of each apartment ambitiously spanning 957 to 1508 sq.ft.



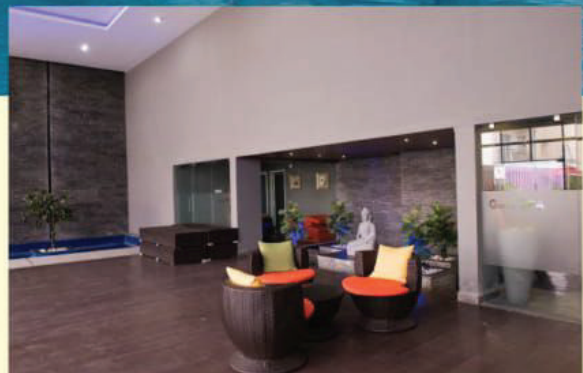
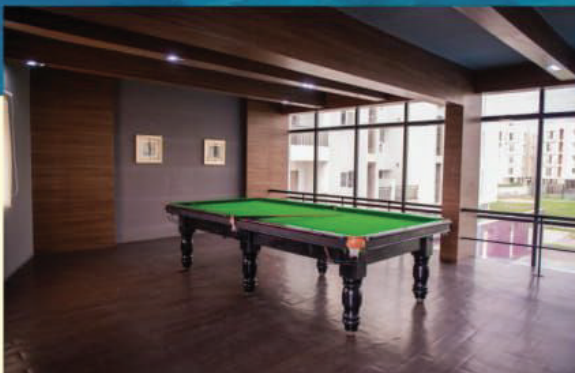
Situated in Pallavaram - Thiruneermalai, Jains Alpine Meadows nestles comfortably amidst heritage sites and temples as well as some of the city's important landmarks, institutions, banks, hotels, utility services, reputable industries and the ribbon-like IT corridor.

Located at a mere 2.9 Kms. from the GST Road (Pond's Factory), this charming enclave is enviously close to the Airport and Pallavaram Railway Station. Besides the proximity to the city, your home at Alpine Meadows comes at an irresistible price.



CLUB HOUSE

- A magnificent swimming pool with separate toddler's pool
- A resourcefully-designed club house with gymnasium and health club
- Medical clinic • Multipurpose community hall







OUTDOOR AMENITIES

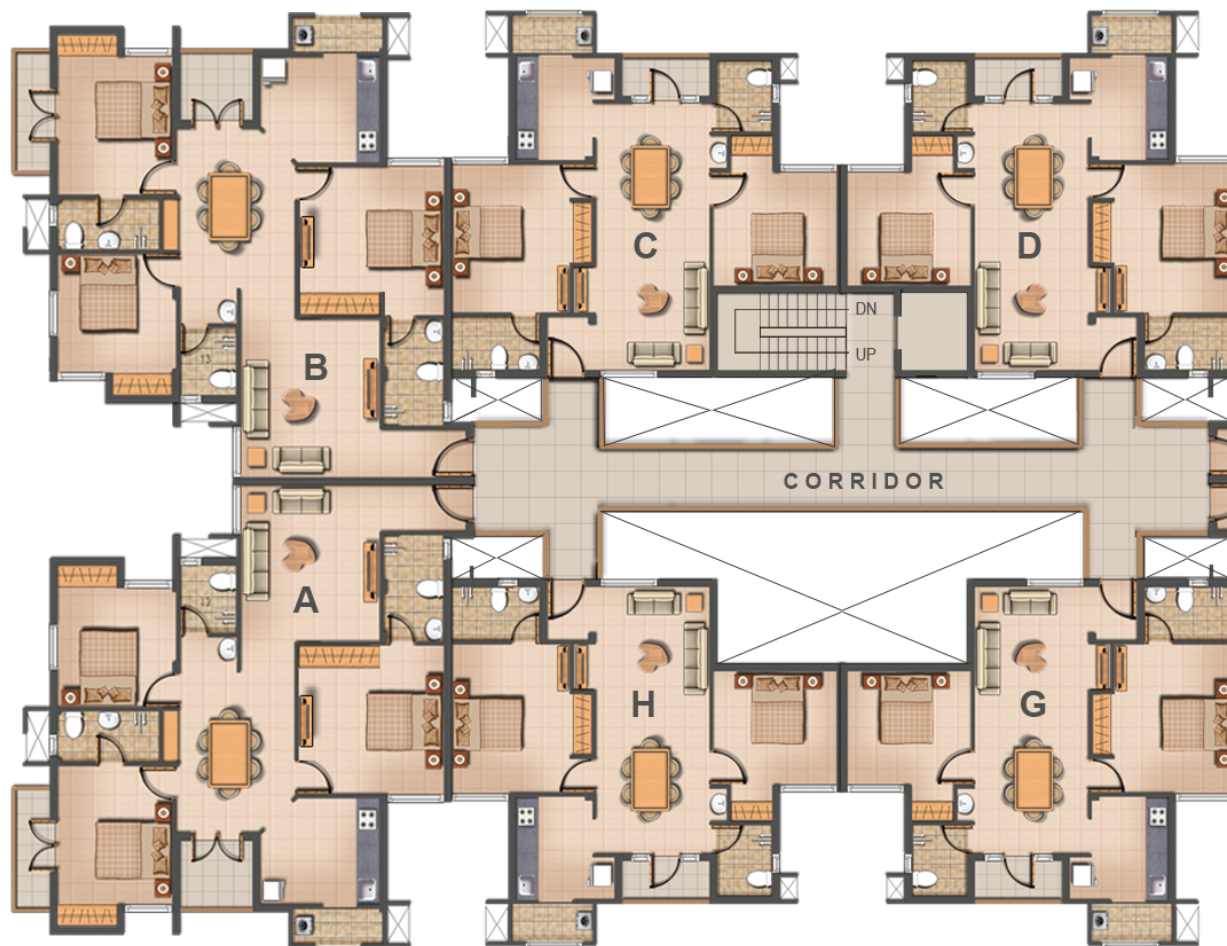
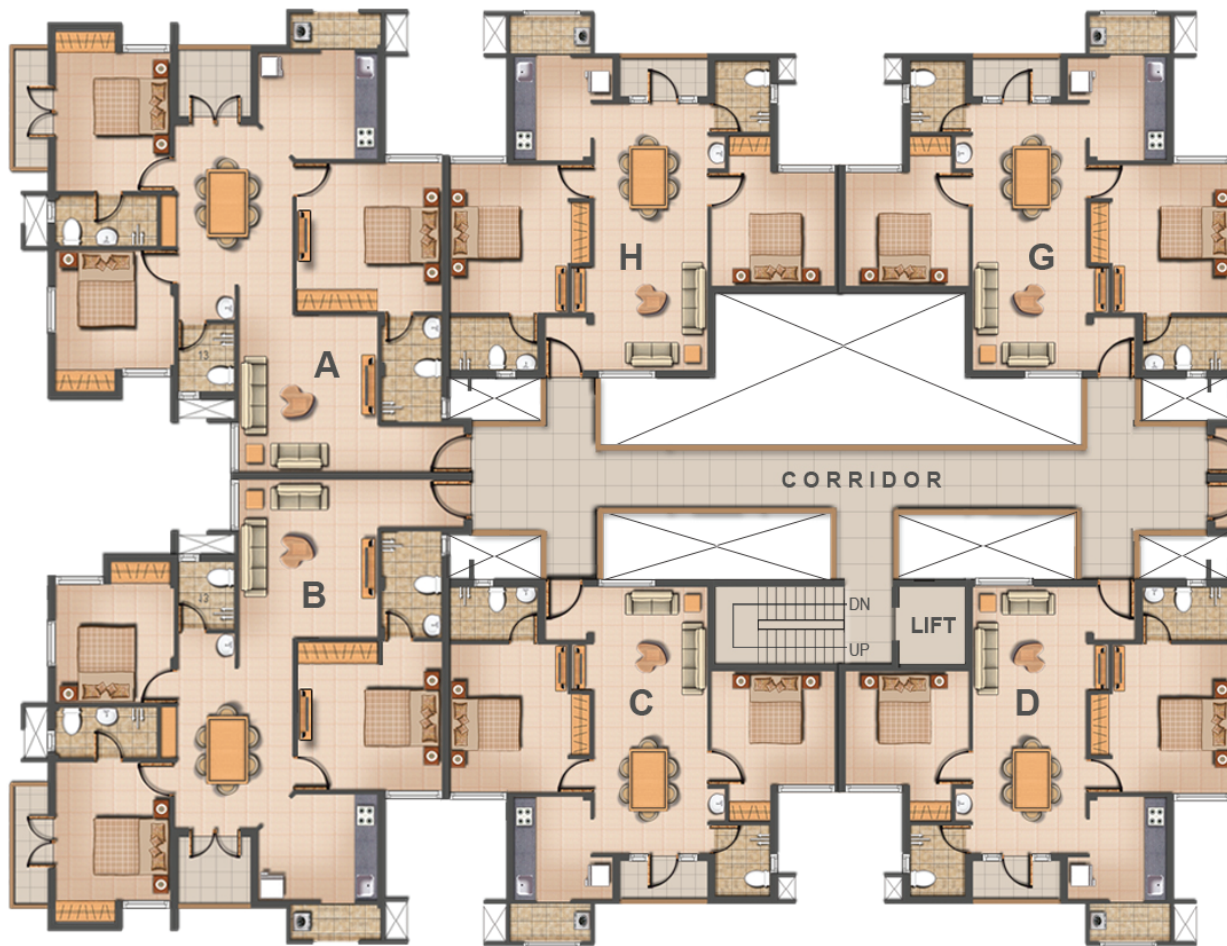
- Aesthetically-designed landscape garden • Children's play area • Basket Ball Post • Tennis Court
- Amphitheatre • Party Lawn • Cricket Net Practice Area • Senior Citizens' Corner • Shuttle Court
- Modern Visitors' Management System • 24 Hrs Security Patrolling • CCTV Surveillance System





SITE PLAN

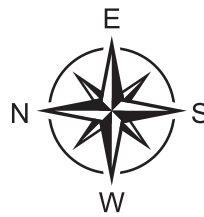
Alpine Meadows





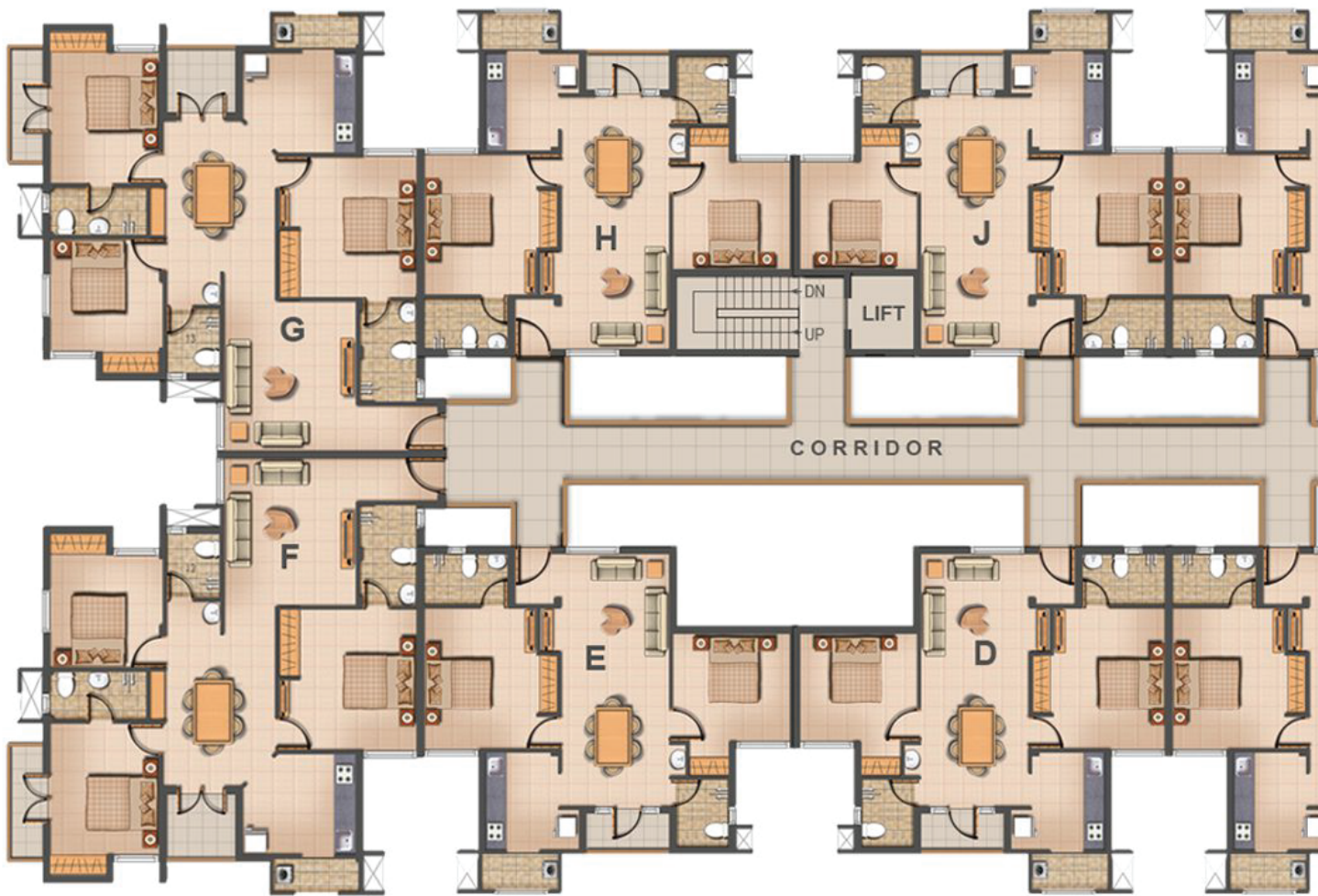
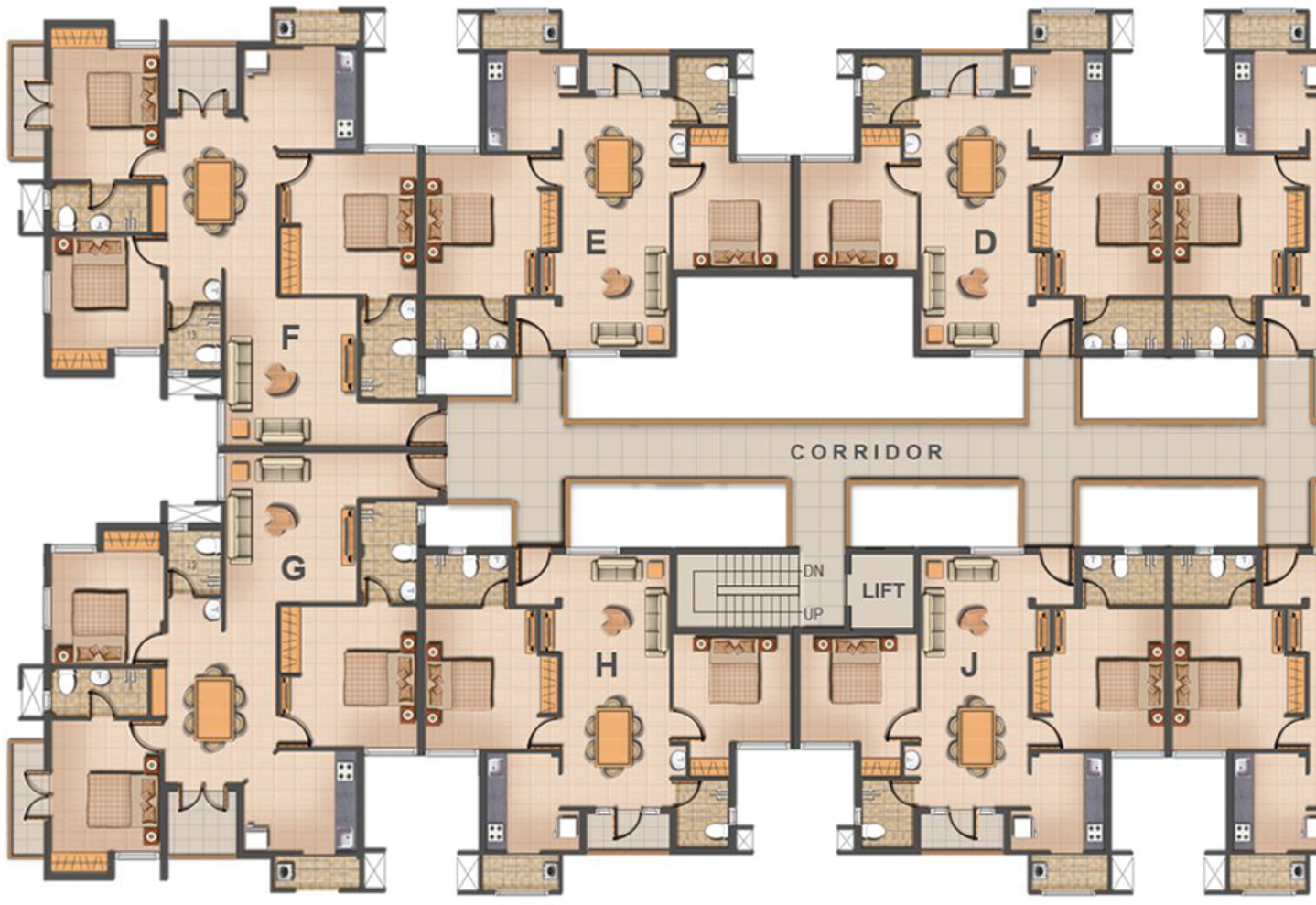
BLOCK - 19 & 21

FLAT NOS	SALEABLE AREA
A	1431
B	1431
C	962
D	962
E	1431
F	1431
G	962
H	962



BLOCK - 20 & 22

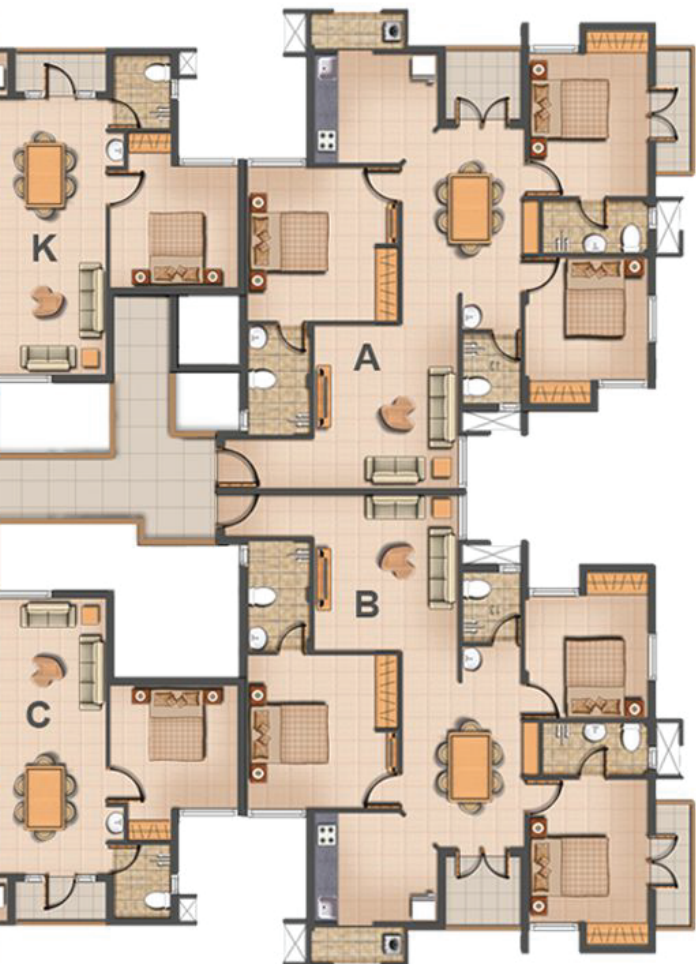
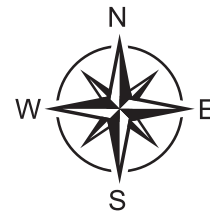
FLAT NOS	SALEABLE AREA
A	1431
B	1431
C	962
D	962
E	1431
F	1431
G	962
H	962





BLOCK - 24 to 30

FLAT NOS	SALEABLE AREA
A	1431
B	1431
C	962
D	957
E	957
F	1431
G	1431
H	957
I	957
J	962



BLOCK - 25 to 31

FLAT NOS	SALEABLE AREA
A	1431
B	1431
C	962
D	957
E	957
F	1431
G	1431
H	957
I	957
J	962

2 BHK

SIZE - 957 to 962 Sq.ft

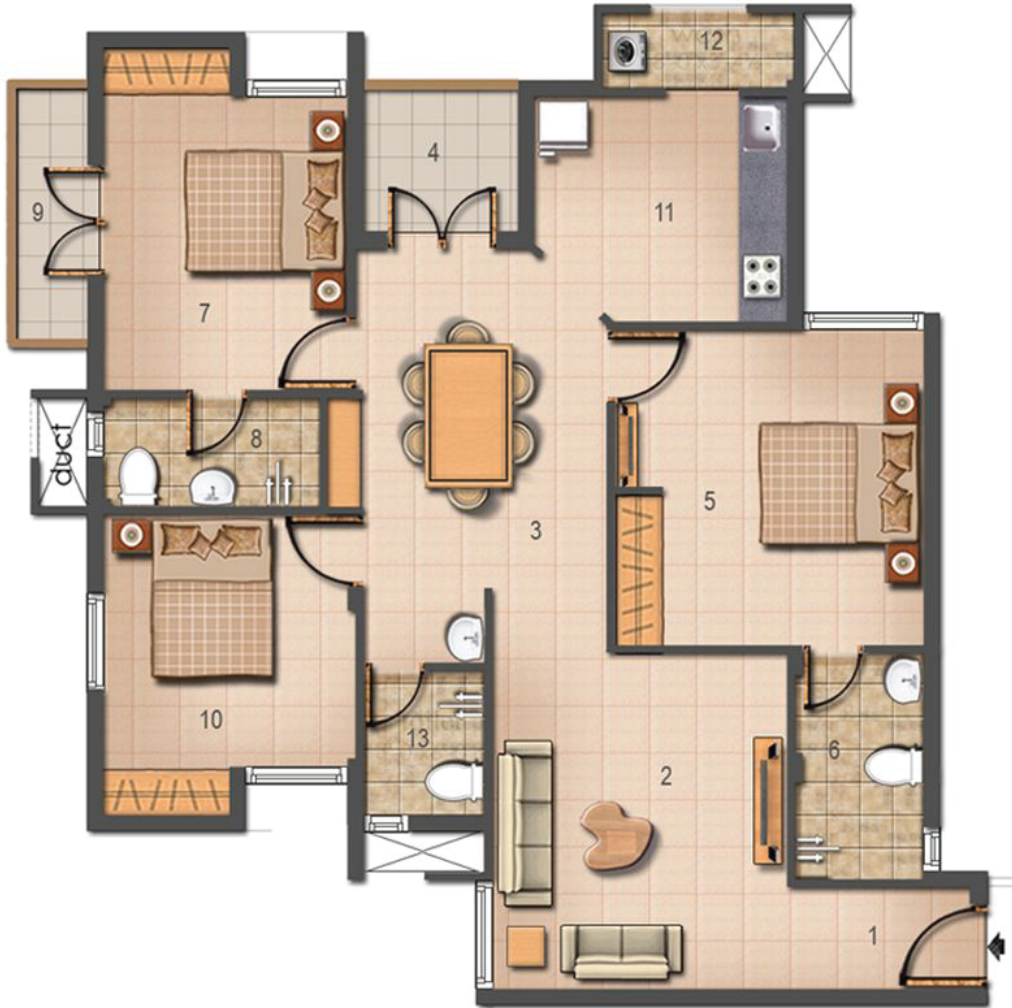


TYPICAL FLOOR FLAT - C, D, E, H, J, K

1. Foyer	4'3½" x 4'8½"
2. LIV/DIN	10'0" X 23'5½"
3. BALCONY	7'8½" X 3'X9"
4. BED - 1	10'5" X 13'0"
5. TOILET	7'9" X 4'8½"
6. BED - 2	10'10½" X 10'0"
7. KITCHEN	6'9" X 9'1"
8. WASH	7'1" X 3'4½"
9. C.TOILET	4'10½" X 6'3"

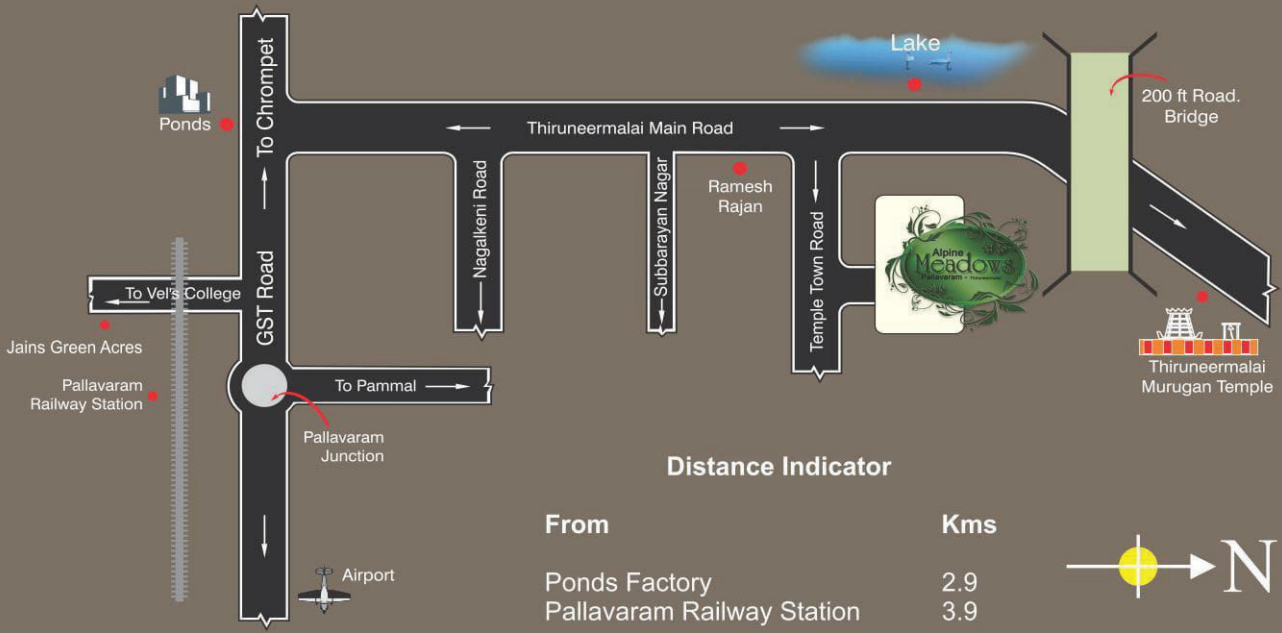
3 BHK

SIZE - 1431 Sq.ft



TYPICAL FLOOR FLAT - A, B, F, G

1. Foyer	7'7½"	x	4'2½"
2. LIVING	12'2½"	X	13'11"
3. DINNING	10'0½"	X	14'X0"
4. BALCONY	6'3"	X	6'4"
5. BED - 1	12'9½"	X	13'1"
6. TOILET	5'4"	X	9'4½"
7. BED - 2	10'1½"	X	12'2"
8. TOILET	8'11½"	X	4'6"
9. BALCONY	3'3"	X	11'1½"
10. BED - 3	10'5½"	X	10'10½"
11. KITCHEN	10'6"	X	9'4"
12. WASH	8'0"	X	3'4½"
13. C. TOILET	5'0"	X	6'0"



JAINS

JAIN HOUSING & CONSTRUCTIONS LTD.

Bangaluru | Chennai | Cochin | Coimbatore | Hyderabad | Tiruppur

Group of Companies



98, 99, Habibullah Rd, Near Pasumpon Devar Kalyana,
Parthasarathy Puram, T. Nagar, Chennai, Tamil Nadu - 600017
044 - 4949 4474

Member
CREDAI

www.jainhousing.com