

The **ONE**

Cherishing the Royal Lifestyle



LUXURIOUS LIFESTYLE APARTMENTS



All you need is a kingdom

Creating Masterpieces in Concrete



Perfecting the Art of Winning



Taking centre-stage on the construction canvas has always come easy to Jain Housing. We have never looked back on our illustrious two-decade long history; but to draw inspiration. Our abiding philosophy of sparking the fusion between contemporary class, detailed architecture and conscientious engineering finds realization through our endeavours - each hinting the immensity of the passion involved. As an unequalled colossus in the construction arena, we take pride in being one of the major reasons why the landscapes of Bangalore, Chennai, Cochin, Coimbatore and Hyderabad wear a stunning look.

A whopping 4.5 million sq. ft. of built-up area and 175 projects, we pause to announce that not less than an astonishing 10 million sq. ft. of space has been outlined for ongoing projects. And competing with our growing dominance on real estate is our capacity to serve satisfaction. Spreading smiles of contentment to over 4500 overjoyed families though, is the ruling rationale why our name has become synonymous with Trust, Excellence and Eminence.

Winning by degrees is something we have left to others, for we believe in storming the Architectural Arena with our landmark designs, splendid engineering and staggering stretch of prized terrain. The target is well achieved in the form of the Archway, cornering a key locale in the prime residential locale of Orme's Road, Kilpauk.

A Place of
Pride

THE
ARCHWAY
ORME'S ROAD - KILPAUK





Worth its weight in gold

Directed to achieve a unique blend of different schools of architecture and the impressive use of space, the best minds of Jain housing see their vision materializing in the form of The Archway. Your home in the Archway comes contained with a hard-to-miss sense of luxury, an orchestrated spread of space and an unbeatable location advantage. Come and take a look at the Amazing Archway and be prepared to checkmate your doubts.

Cornering Superlatives

The opening move of the Archway starts with a complete reconnaissance of its strategic terrain; it is positioned as a key corner expanse spanning 5.5 grounds of the very upscale Orme's Road, Kilpauk. Comprising of built-up area of 2700 – 2900 sq. ft. each, a battalion of 8 apartments are stacked elegantly on Ground plus Four storeys exemplifying the excellent co-ordination between elements of space, architecture and design. A convoy of spectacular amenities bedecks the Archway accomplishing the objective of enabling a royal lifestyle.

Splintering any notion that you might have with respect to the quality of project, The Archway exudes luxury from every eave, from every nook. A winning game begins with the right move. Continue the winning streak by homing at The Archway.



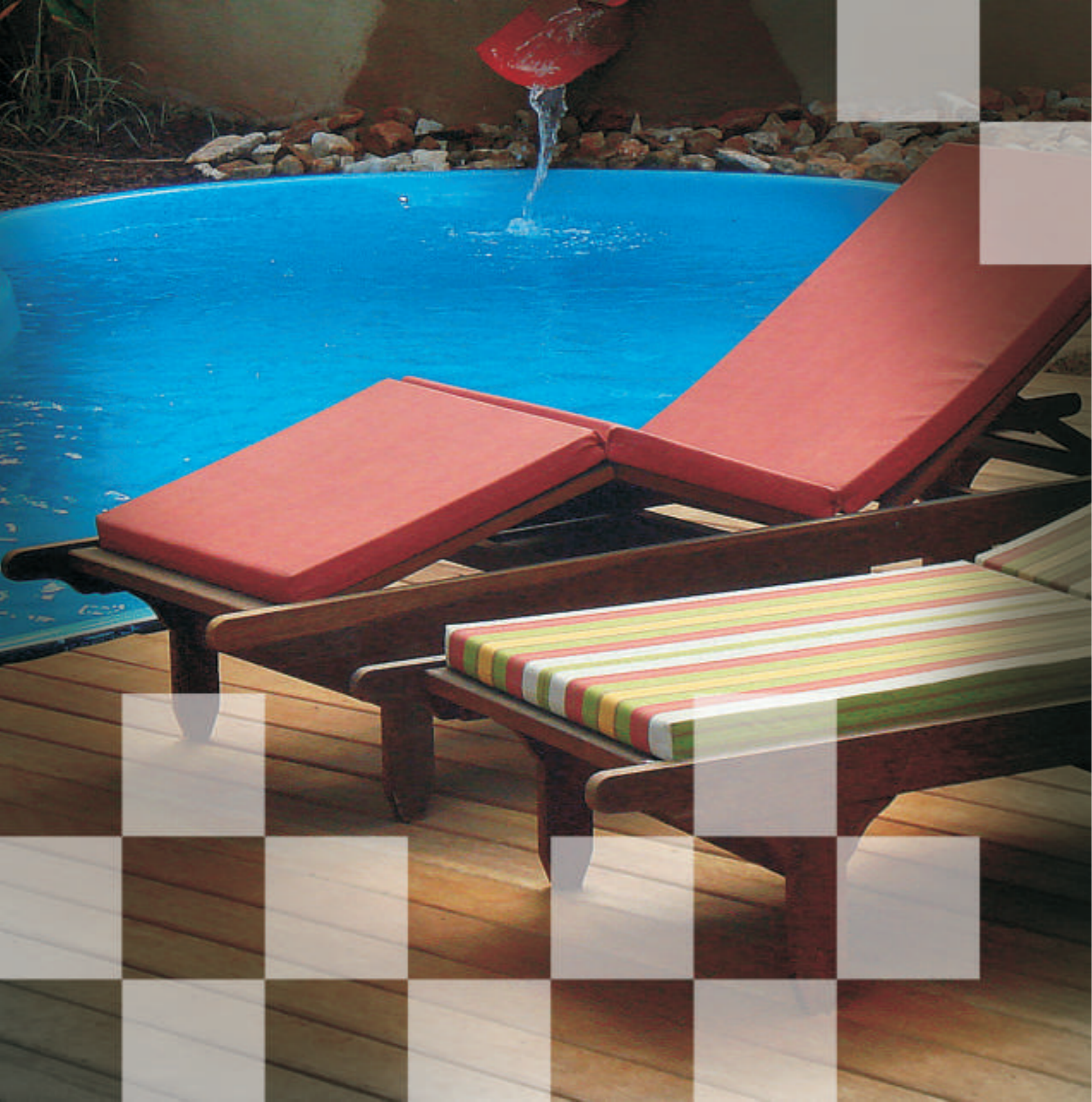
Partnering with Health

Fighting fit is the right way to live and The Archway partners with you by presenting the state-of-the-art gym. Equipped with the latest in the world of gyming, our gym ensures that the action stays right there in your life.



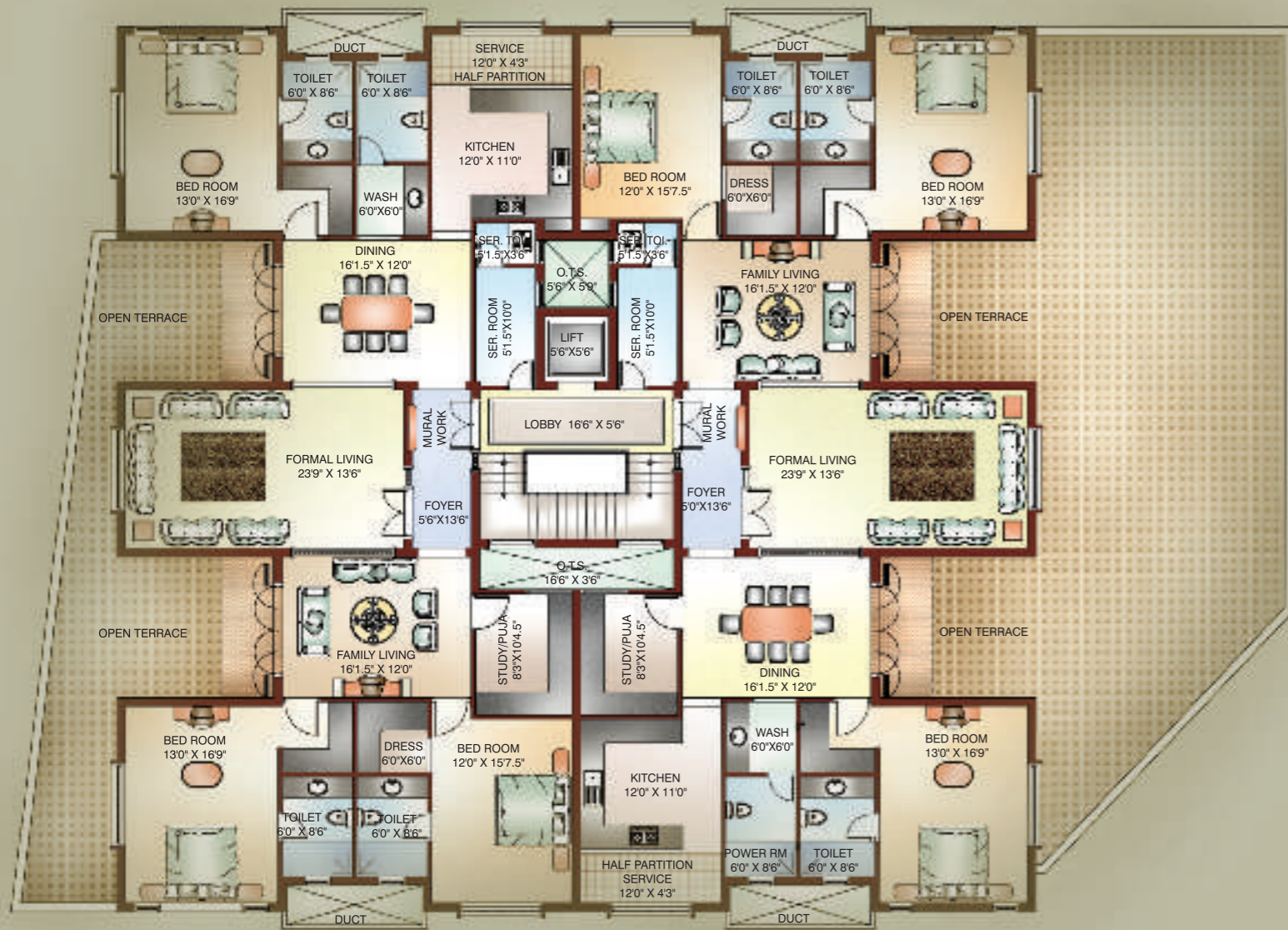
Taking time out for Life

Bid goodbye to persistent aches with a quick steam – all within the confines of the Archway. Promising you newer levels of comfort, the Archway brings the promised luxurious lifestyle in warm curling wisps.

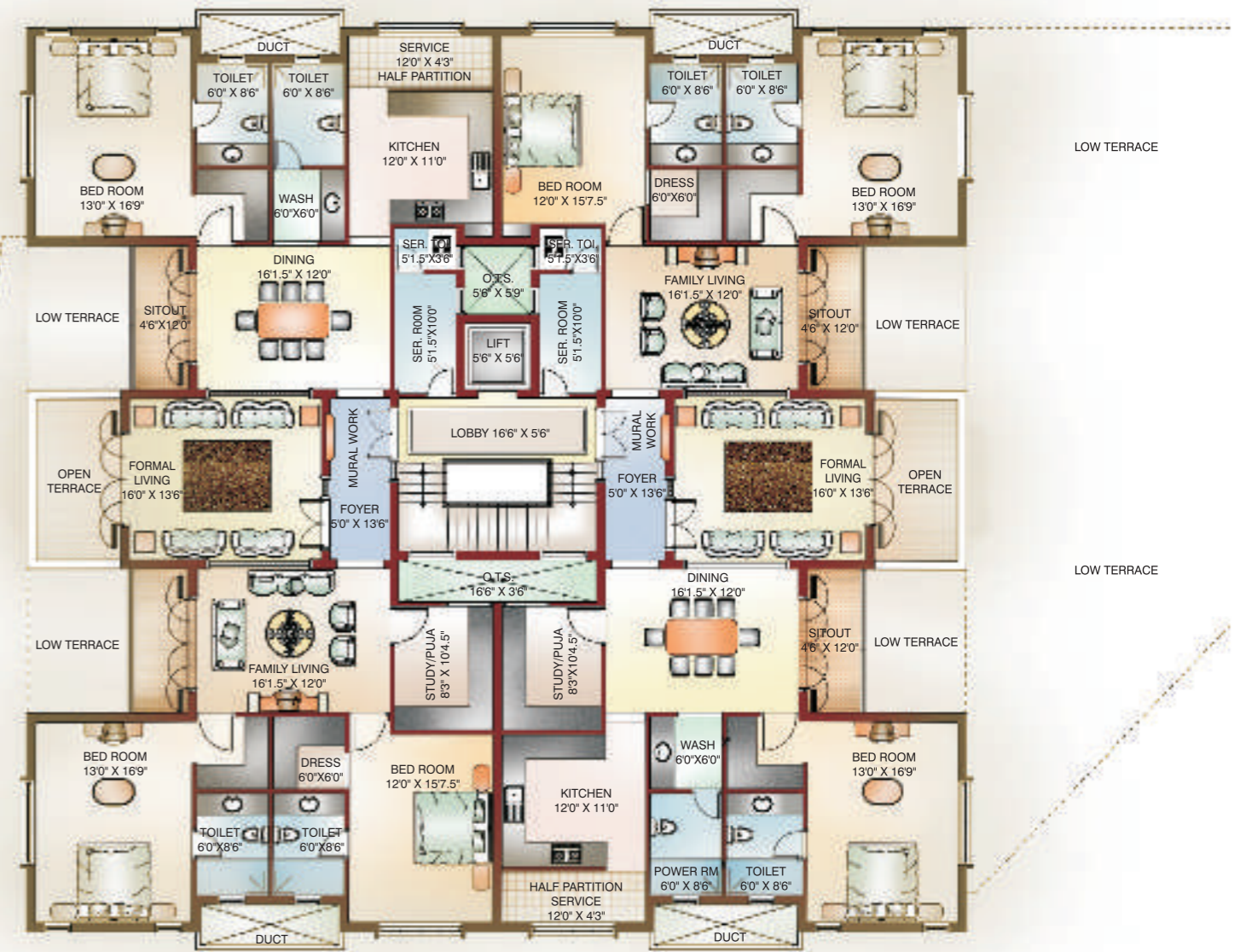


Still time like a Royal

Recline in the swirling waters of the Jacuzzi and rejuvenate under calming effects of water at the lavishly-planned Jacuzzi. Sink into the eddies of the Jacuzzi and trespass into unbidden tranquility

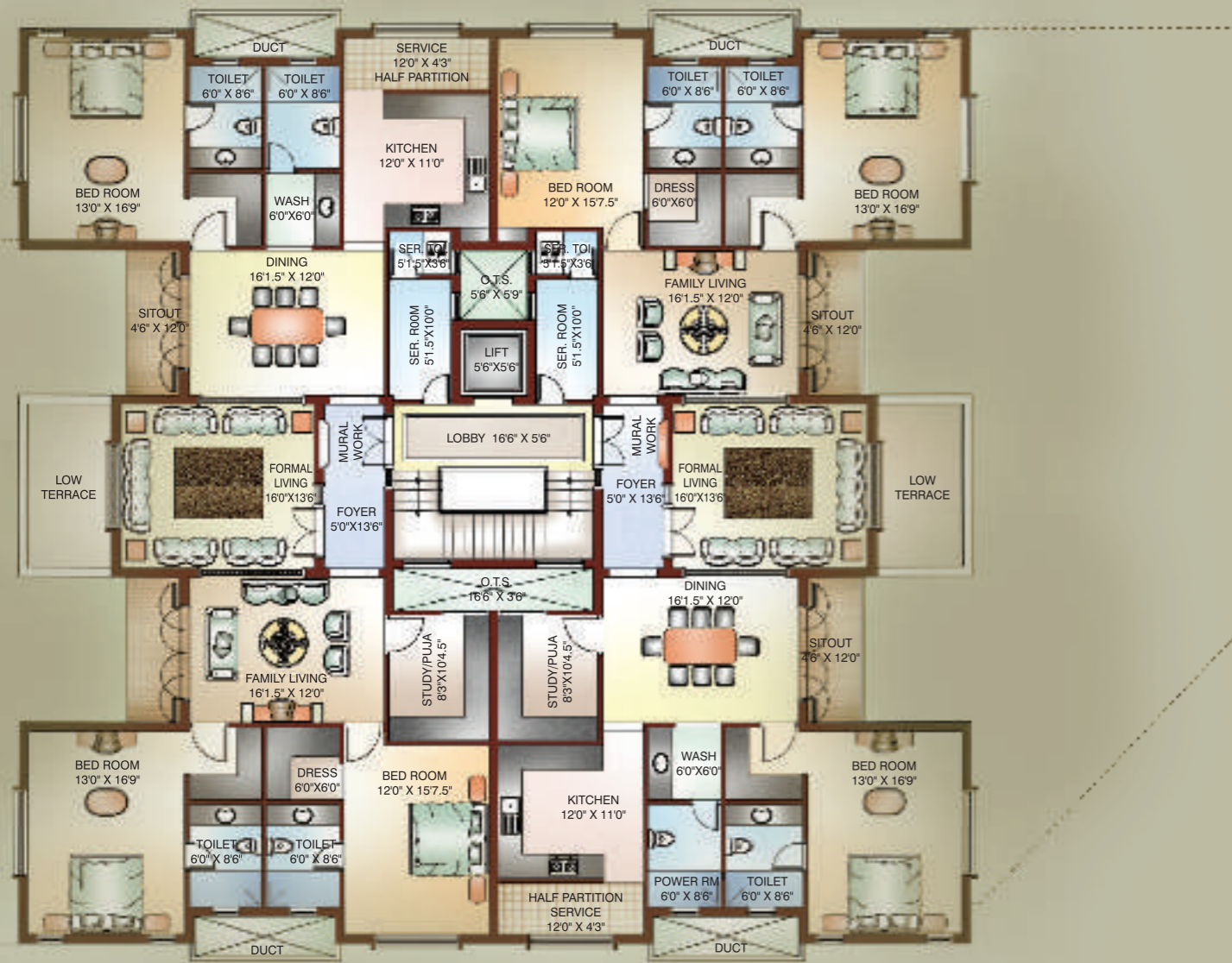


First Floor Plan

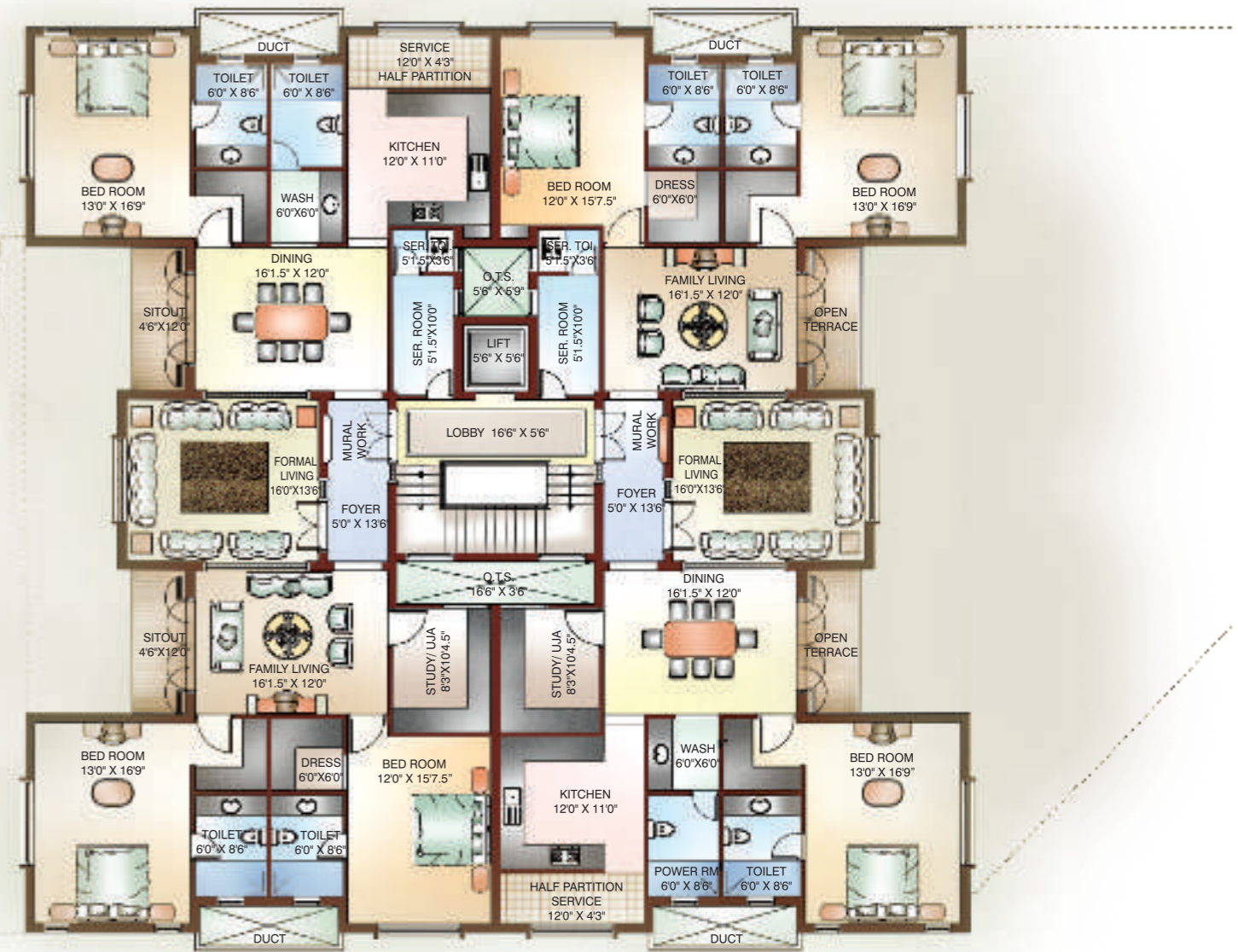


Second Floor Plan





Third Floor Plan



Fourth Floor Plan





Car Parking Plan

Salient Features

- A resourcefully - designed club house with gymnasium and health club
- Aesthetically - designed landscape garden at the main entrance
- Ground floor / Typical floor lift lobbies will be of granite / marble
- Standby generator for all essential points inside the flat, common area and lift
- Roof - top party area
- Piped Gas Line
- Security Intercom in every apartment

Specifications

Flooring:

High - quality vitrified tiles for bedroom, laminated wooden flooring for formal living room, high - quality imported marble for family living and dining rooms, rustic vitrified tiles for kitchen and anti - skid ceramic tiles for terrace.

Doors & Windows:

Main Entrance & Bedroom doorframe made of teakwood and skin paneled shutters portraying a flamboyant look. UPVC windows with a blend of Modern style in swing or sliding pattern.

Electricals:

Provision for split A/c in bedrooms, formal & family living rooms only. Shock - free, elegant - looking modular electrical switches in all the rooms.

Painting & Finishes:

The walls coated with putty and emulsion paint of impeccable quality.

Kitchen Platform & Sink:

Spacious kitchen with black granite slab and Stainless steel Sink without a drain board.

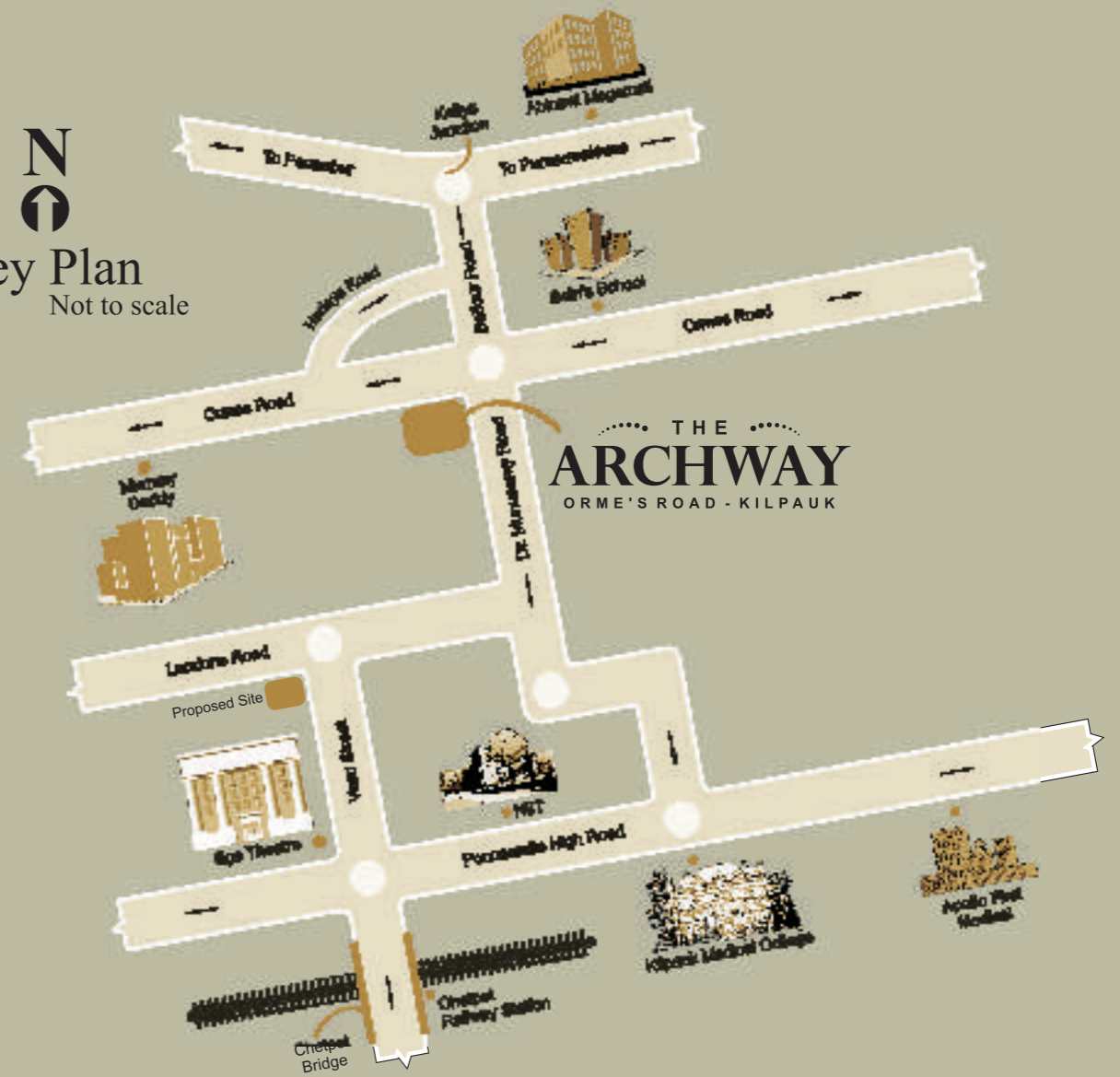
Plumbing & Sanitary:

All toilets will be provided with wall - mounted cascade of color matching to tile. High - quality Jaquar or equivalent CP fittings for all the toilets.

Commanding from the Cornerstone

Reclining in one of the most upscale locations of Chennai, Orme's Road, Kilpauk, The Archway enjoys an enviable pride of place and occupies the most cherished corner hideaway possible. This hallmark of luxury comes in close proximity to places of everyday importance like shopping malls, hospitals and recreation centers.

Key Plan Not to scale



Complete Architectural Solutions

Chettinaad Design

For Expressive Interiors


Sajawat

Project Management & Services


Promags

Legal Advisors

M/s. RANK ASSOCIATES

Structural Consultant

Nagesh



JAIN HOUSING...
where you love coming home

Corporate Office : #11, Somasundaram Street, T.Nagar, Chennai - 17. Ph.:044 - 28153111 • Fax: 28154151 • www.jainhousing.com

Bangalore • Chennai • Cochin • Coimbatore • Hyderabad • Mysore • Pune

This brochure is conceptual in nature & is by no means a legal offering. The promoters have the right to change, alter, delete or add any specification mentioned herein.